

KLEUR CODE	VERPAKKING		% VAN TOTAAL		NCS KLEURCODE
	DELPHI WIT	DOVER WIT	DELPHI WIT	DOVER WIT	NCS CODE
DE01	6 Kg/20 Kg	0 Kg	100,0%	0,0%	S1010-Y40R
DE02	18 Kg/60 Kg	6 Kg/20Kg	75%	25%	S1010-Y40R / S1005-Y40R
DE03	6 Kg/20 Kg	6 Kg/20 Kg	50,0%	50,0%	S1005-Y40R
DE04	6 Kg/20Kg	18 Kg/60Kg	25%	75%	S0804-Y50R
DO01	0 Kg	6 Kg/20 Kg	0%	100%	S0500-N
KLEUR CODE	ROMEINS OKER	DOVER WIT	ROMEINS OKER	DOVER WIT	NCS CODE
RO01	6 Kg	0 Kg	100,0%	0,0%	S2030-Y20R
RO02	12 Kg	6 Kg	66,7%	33,3%	S2030-Y20R / S1020-Y20R
RO03	6 Kg	6 Kg	50,0%	50,0%	S1020-Y20R
RO04	6 Kg	12 Kg	33,3%	66,7%	S1515-Y20R
RO05	6 Kg	20 Kg	23,1%	76,9%	S1015-Y20R
RO06	6 Kg	40 Kg	13,0%	87,0%	S1010-Y20R
RO07	1 Kg	20 Kg	4,8%	95,2%	S1005-Y20R
KLEUR CODE	NASSAU ORANJE	DOVER WIT	NASSAU ORANJE	DOVER WIT	NCS CODE
NA01	6 Kg	0 Kg	100,0%	0,0%	S2030-Y40R
NA02	12 Kg	6 Kg	66,7%	33,3%	S2020-Y40R
NA03	6 Kg	6 Kg	50,0%	50,0%	S2020-Y40R / S1515-Y40R
NA04	6 Kg	12 Kg	33,3%	66,7%	S1515-Y40R
NA05	6 Kg	20 Kg	23,1%	76,9%	S1510-Y40R
NA06	6 Kg	40 Kg	13,0%	87,0%	S1010-Y40R
NA07	1 Kg	20 Kg	4,8%	95,2%	S1005-Y40R
KLEUR CODE	DJENNÉ ROOD	DOVER WIT	DJENNÉ ROOD	DOVER WIT	NCS CODE
DJ01	6 Kg	0 Kg	100,0%	0,0%	S3020-Y70R
DJ02	12 Kg	6 Kg	66,7%	33,3%	S3020-Y70R / S2020-Y70R
DJ03	6 Kg	6 Kg	50,0%	50,0%	S2020-Y70R
DJ04	6 Kg	12 Kg	33,3%	66,7%	S2020-Y70R / S1515-Y70R
DJ05	6 Kg	20 Kg	23,1%	76,9%	S1515-Y70R
DJ06	6 Kg	40 Kg	13,0%	87,0%	S1010-Y70R
DJ07	1 Kg	20 Kg	4,8%	95,2%	S0907-Y70R
KLEUR CODE	AYERS ROCK	DOVER WIT	AYERS ROCK	DOVER WIT	NCS CODE
AY01	6 Kg	0 Kg	100,0%	0,0%	S3040-Y70R
AY02	12 Kg	6 Kg	66,7%	33,3%	S3040-Y70R / S2030-Y70R
AY03	6 Kg	6 Kg	50,0%	50,0%	S2030-Y70R
AY04	6 Kg	12 Kg	33,3%	66,7%	1030-Y70R
AY05	6 Kg	20 Kg	23,1%	76,9%	S1030-Y70R / S1020-Y70R
AY06	6 Kg	40 Kg	13,0%	87,0%	S1020-Y70R
AY07	1 Kg	20 Kg	4,8%	95,2%	S1015-Y70R
KLEUR CODE	IQUITOS GROEN	DOVER WIT	IQUITOS GROEN	DOVER WIT	NCS CODE
IQ01	6 Kg	0 Kg	100,0%	0,0%	S4020-G90Y
IQ02	12 Kg	6 Kg	66,7%	33,3%	S4020-G90Y / S3010-G90Y
IQ03	6 Kg	6 Kg	50,0%	50,0%	S3010-G90Y
IQ04	6 Kg	12 Kg	33,3%	66,7%	S3010-G90Y / S2010-G90Y
IQ05	6 Kg	20 Kg	23,1%	76,9%	S2010-G90Y
IQ06	6 Kg	40 Kg	13,0%	87,0%	S1510-G90Y
IQ07	1 Kg	20 Kg	4,8%	95,2%	S1005-G90Y
KLEUR CODE	GOMERA GRIJS	DOVER WIT	GOMERA GRIJS	DOVER WIT	NCS CODE
GO01	6 Kg	0 Kg	100,0%	0,0%	S6502-B
GO02	12 Kg	6 Kg	66,7%	33,3%	S5502-B
GO03	6 Kg	6 Kg	50,0%	50,0%	S5502-B / S4502-B
GO04	6 Kg	12 Kg	33,3%	66,7%	S4502-B
GO05	6 Kg	20 Kg	23,1%	76,9%	S3502-B
GO06	6 Kg	40 Kg	13,0%	87,0%	S2502-B
GO07	1 Kg	20 Kg	4,8%	95,2%	S1502-B



DE 01



DE 02



DE 03



DE 04



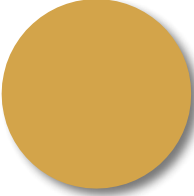
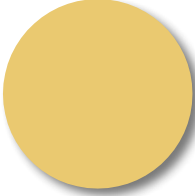

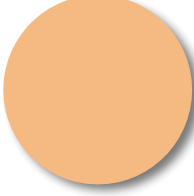
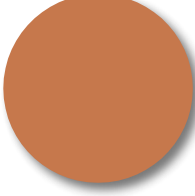


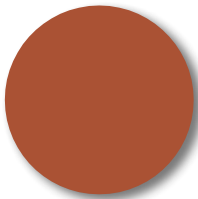
DO 01

VERKLARING Aan de hand van de gekozen kleurcode kunt u in dezelfde regel het recept vinden. In de kolom "VERPAKKING" staat hoe het recept gemaakt kan worden met standaard verpakkingen van Tierrafino Duro. In de kolom "% VAN TOTAAL" staat het aandeel standaardkleur en het aandeel Duro Dover Wit in procenten van het uiteindelijke totaal gewicht.

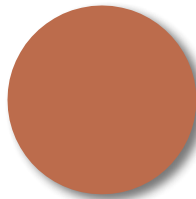
KLEUR CODE	VERPAKKING			% VAN TOTAAL			NCS KLEURCODE
	ROMEINS OKER	IQUITOS GROEN	DOVER WIT	ROMEINS OKER	IQUITOS GROEN	DOVER WIT	
RI01	6 Kg	6 Kg	0 Kg	50,0%	50,0%	0,0%	S3020-Y
RI02	6 Kg	6 Kg	6 Kg	33,3%	33,3%	33,4%	S3010-Y10R
RI03	6 Kg	6 Kg	20 Kg	18,8%	18,8%	62,4%	S3010-Y10R/S2010-Y10R
RI04	6 Kg	6 Kg	40 Kg	11,5%	11,5%	77,0%	S2010-Y10R
RI05	6 Kg	6 Kg	80 Kg	6,5%	6,5%	87,0%	S1510-Y10R
RI06	1 Kg	1 Kg	40 Kg	2,4%	2,4%	95,2%	S0804-Y10R
KLEUR CODE	NASSAU ORANJE	IQUITOS GROEN	DOVER WIT	NASSAU ORANJE	IQUITOS GROEN	DOVER WIT	NCS CODE
NI01	6 Kg	6 Kg	0 Kg	50,0%	50,0%	0,0%	S3010-Y30R
NI02	6 Kg	6 Kg	6 Kg	33,3%	33,3%	33,4%	S3010-Y30R/S2010-Y30R
NI03	6 Kg	6 Kg	20 Kg	18,8%	18,8%	62,4%	S2010-Y30R
NI04	6 Kg	6 Kg	40 Kg	11,5%	11,5%	77,0%	S2010-Y30R/S1510-Y30R
NI05	6 Kg	6 Kg	80 Kg	6,5%	6,5%	87,0%	S1510-Y30R
NI06	1 Kg	1 Kg	40 Kg	2,4%	2,4%	95,2%	S0804-Y30R
KLEUR CODE	DJENNÉ ROOD	IQUITOS GROEN	DOVER WIT	DJENNÉ ROOD	IQUITOS GROEN	DOVER WIT	NCS CODE
DI01	6 Kg	6 Kg	0 Kg	50,0%	50,0%	0,0%	S4020-Y40R
DI02	6 Kg	6 Kg	6 Kg	33,3%	33,3%	33,4%	S3020-Y40R
DI03	6 Kg	6 Kg	20 Kg	18,8%	18,8%	62,4%	S3010-Y40R
DI04	6 Kg	6 Kg	40 Kg	11,5%	11,5%	77,0%	S2010-Y50R
DI05	6 Kg	6 Kg	80 Kg	6,5%	6,5%	87,0%	S1510-Y50R
DI06	1 Kg	1 Kg	40 Kg	2,4%	2,4%	95,2%	S0804-Y50R
KLEUR CODE	AYERS ROCK	IQUITOS GROEN	DOVER WIT	AYERS ROCK	IQUITOS GROEN	DOVER WIT	NCS CODE
AI01	6 Kg	6 Kg	0 Kg	50,0%	50,0%	0,0%	S4020-Y50R
AI02	6 Kg	6 Kg	6 Kg	33,3%	33,3%	33,4%	S4020-Y50R/S3020-Y50R
AI03	6 Kg	6 Kg	20 Kg	18,8%	18,8%	62,4%	S3020-Y50R
AI04	6 Kg	6 Kg	40 Kg	11,5%	11,5%	77,0%	S2010-Y60R
AI05	6 Kg	6 Kg	80 Kg	6,5%	6,5%	87,0%	S2010-Y60R
AI06	1 Kg	1 Kg	40 Kg	2,4%	2,4%	95,2%	S1005-Y60R
KLEUR CODE	NASSAU ORANJE	GOMERA GRIJS	DOVER WIT	NASSAU ORANJE	GOMERA GRIJS	DOVER WIT	NCS CODE
NG01	12 Kg	6 Kg	0 Kg	66,7%	33,3%	0,0%	S5005-Y20R
NG02	12 Kg	6 Kg	6 Kg	50,0%	25,0%	25,0%	S4005-Y20R
NG03	12 Kg	6 Kg	20 Kg	31,6%	15,8%	52,6%	S4005-Y20R/S3005-Y20R
NG04	12 Kg	6 Kg	40 Kg	20,6%	10,3%	69,1%	S3005-Y20R
NG05	12 Kg	6 Kg	80 Kg	12,2%	6,1%	81,7%	S3005-Y20R/S2005-Y20R
NG06	2 Kg	1 Kg	40 Kg	4,6%	2,3%	93,1%	S1505-Y20R
KLEUR CODE	DJENNÉ ROOD	GOMERA GRIJS	DOVER WIT	DJENNÉ ROOD	GOMERA GRIJS	DOVER WIT	NCS CODE
DG01	12 Kg	6 Kg	0 Kg	66,7%	33,3%	0,0%	S5010-Y50R
DG02	12 Kg	6 Kg	6 Kg	50,0%	25,0%	25,0%	S5010-Y50R/S4010-Y50R
DG03	12 Kg	6 Kg	20 Kg	31,6%	15,8%	52,6%	S4010-Y50R
DG04	12 Kg	6 Kg	40 Kg	20,6%	10,3%	69,1%	S3005-Y80R
DG05	12 Kg	6 Kg	80 Kg	12,2%	6,1%	81,7%	S2005-Y80R
DG06	2 Kg	1 Kg	40 Kg	4,6%	2,3%	93,1%	S1005-Y80R
KLEUR CODE	AYERS ROCK	GOMERA GRIJS	DOVER WIT	AYERS ROCK	GOMERA GRIJS	DOVER WIT	NCS CODE
AG01	12 Kg	6 Kg	0 Kg	66,7%	33,3%	0,0%	S5020-Y50R
AG02	12 Kg	6 Kg	6 Kg	50,0%	25,0%	25,0%	S5010-Y70R
AG03	12 Kg	6 Kg	20 Kg	31,6%	15,8%	52,6%	S4010-Y70R
AG04	12 Kg	6 Kg	40 Kg	20,6%	10,3%	69,1%	S3010-Y70R
AG05	12 Kg	6 Kg	80 Kg	12,2%	6,1%	81,7%	S2010-Y70R
AG06	2 Kg	1 Kg	40 Kg	4,6%	2,3%	93,1%	S1005-Y70R

NCS CODES De NCS-codes zijn met het oog bepaald en zijn een benadering van de kleuren. Door de fijnkorrelige structuur van Duro is het niet mogelijk de kleuren te scannen met een NCS Reader. In veel gevallen zullen de kleuren van de leem op de wand een iets lichtere verschijning hebben dan de NCS kleurstalen. Dit heeft te maken met de lichtinval op en langs een wand. Om te zien of specifieke kleuren geschikt zijn voor uw project, is het mogelijk kleurstalen te bestellen bij de handelaar o.v.v. de aangegeven kleurcode. Door het gebruik van aardepigmenten kunnen verschillen in kleuren ontstaan. Getoonde kleuren zijn onderhevig aan het gebruik van verschillende beeldschermen. Er kunnen aan de getoonde kleuren en de NCS Codes geen rechten worden ontleend.

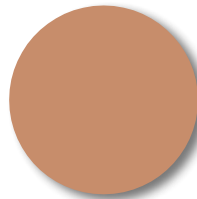
					TITAAAN WIT
WHI01	WHI01	WHI01	WHI01	WHI01	
					PERZISCH GEEL
PER01	PER02	PER03	PER04	PER05	
					GOUD OKER
GOL01	GOL02	GOL03	GOL04	GOL05	
					ORANJE
ORA01	ORA02	ORA03	ORA04	ORA05	
					GOUD OKER POMPEJAANS ROOD
DOR01	DOR02	DOR03	DOR04	DOR05	
					GOUD OKER POMPEJAANS ROOD
ROR01	ROR02	ROR03	ROR04	ROR05	
					POMPEJAANS ROOD
PPR01	PPR02	PPR03	PPR04	PPR05	



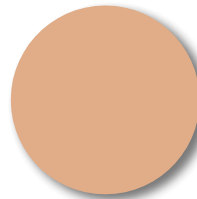
BRR01



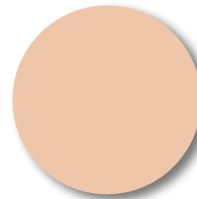
BRR02



BRR03

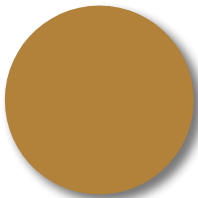


BR R 04

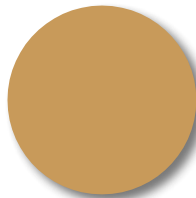


BR R 05

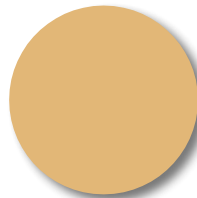
POMPEJAANS ROOD
METAALOXIDE ROOD



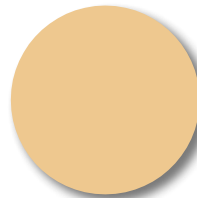
OBR01



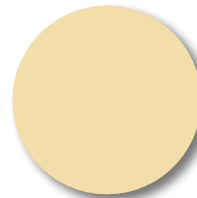
OBR02



OBR03

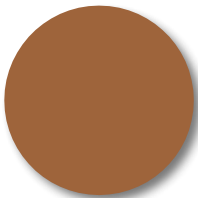


O BR 04

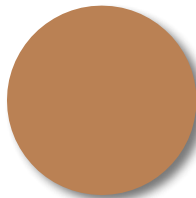


O BR 05

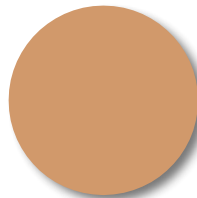
KASSELER BRUIN
GOUD OKER



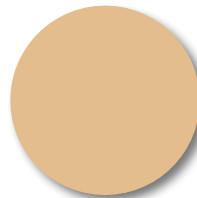
RBR01



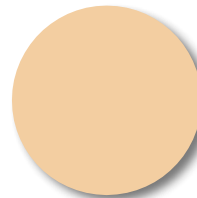
RBR02



RBR03

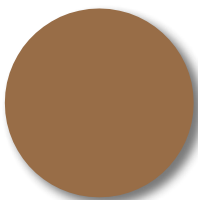


RBR 04

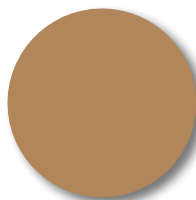


RBR 05

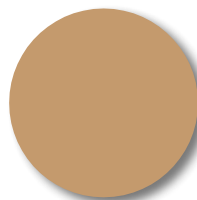
KASSELER BRUIN
POMPEJAANS ROOD



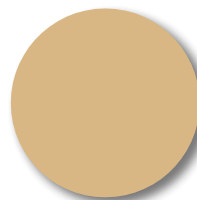
KBR01



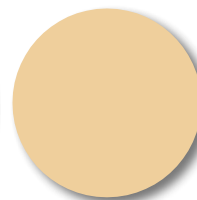
KBR02



KBR03

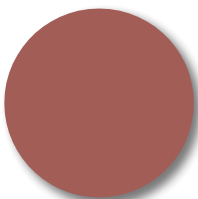


KBR 04

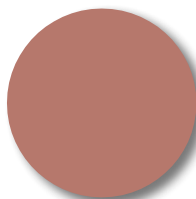


KBR 05

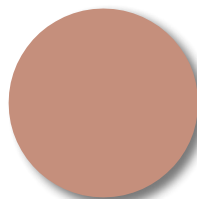
KASSELER BRUIN



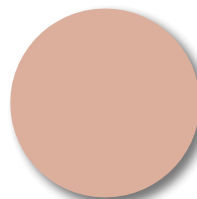
MOR01



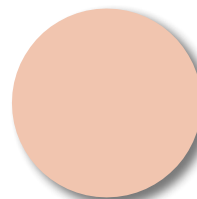
MOR02



MOR03

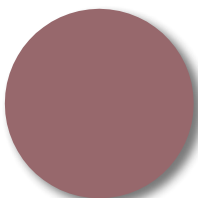


MOR04

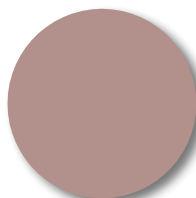


MO R 05

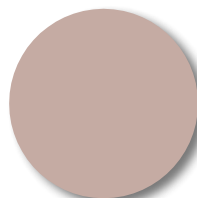
METAALOXIDE ROOD



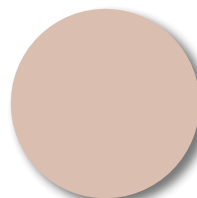
PUR01



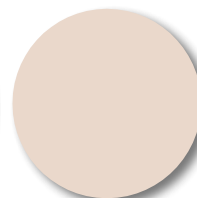
PUR02



PUR03

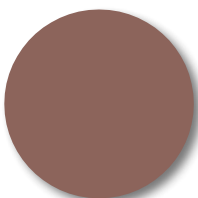


P UR 04

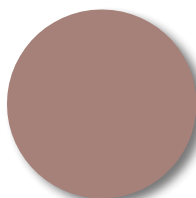


P UR 05

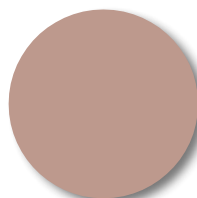
METAALOXIDE ROOD
ULTRAMARIJN BLAUW



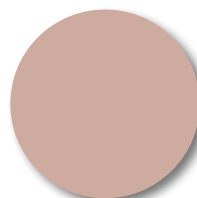
MA H01



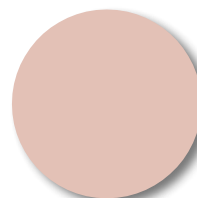
MA H02



MA H03

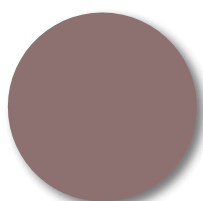


MA H04

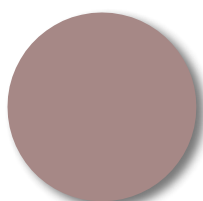


MA H05

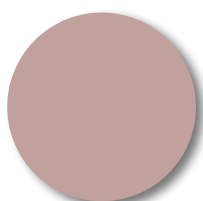
MAHONIE



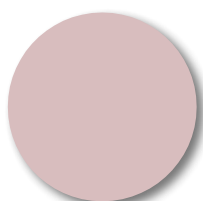
DVI01



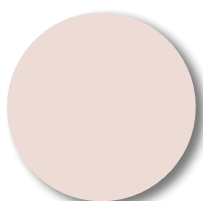
DVI02



DVI03

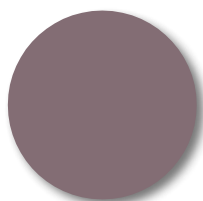


DVI04

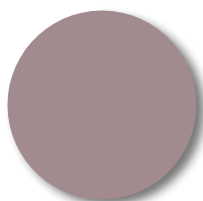


DVI05

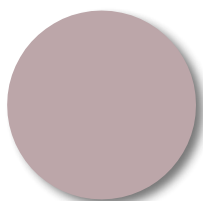
METAALOXIDE ROOD
COBALT BLAUW



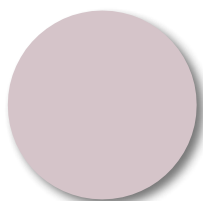
GVI01



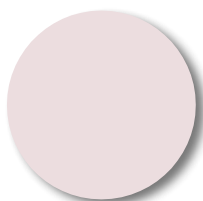
GVI02



GVI03

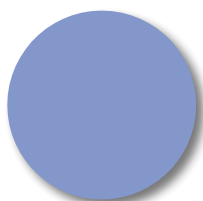


GVI04

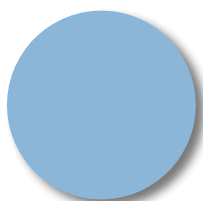


GVI05

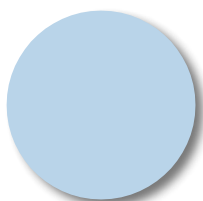
MAHONIE
ULTRAMARIJN BLAUW



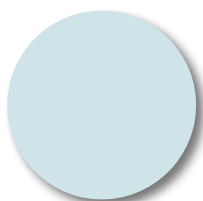
UMB01



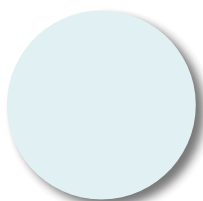
UMB02



UMB03

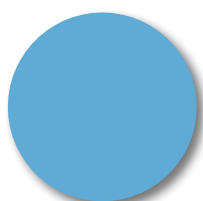


UMB04

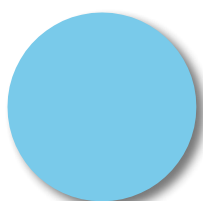


UMB05

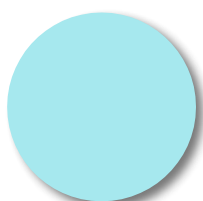
ULTRAMARIJN BLAUW



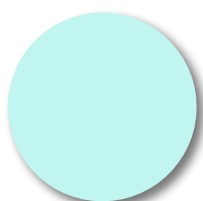
BLU01



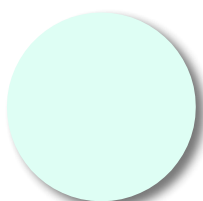
BLU02



BLU03

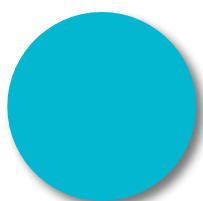


BLU 04

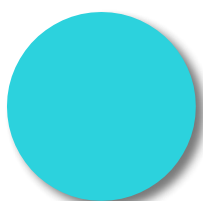


BLU 05

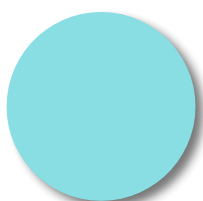
ULTRAMARIJN BLAUW
COBALT BLAUW



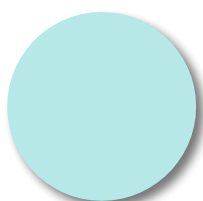
COB01



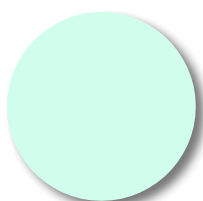
COB02



COB03

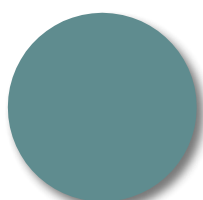


COB04

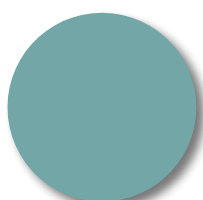


COB05

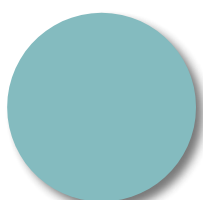
COBALT BLAUW



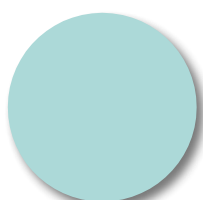
GRB01



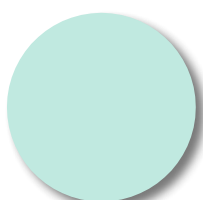
GRB02



GRB03

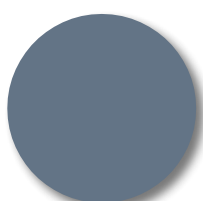


GRB04

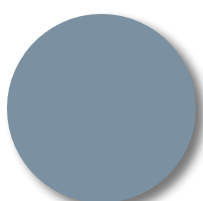


GRB05

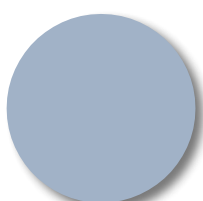
ZWART OXIDE
COBALT BLAUW



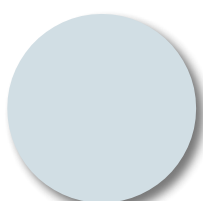
DAB01



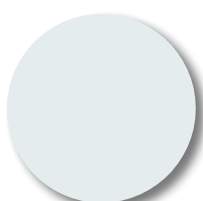
DAB02



DA B03

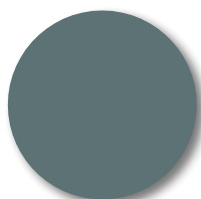


DAB04

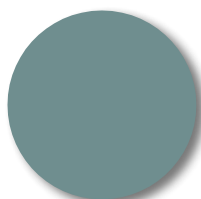


DAB05

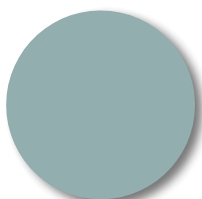
ZWART OXIDE
ULTRAMARIJN BLAUW



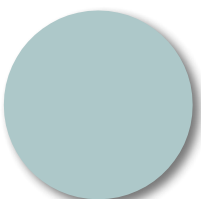
BLB01



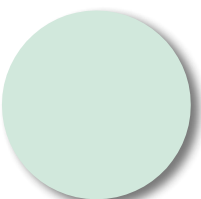
BLB02



BLB03

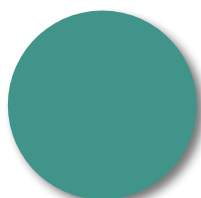


BLB04

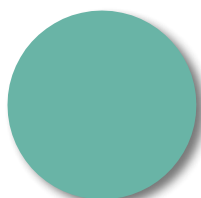


BLB05

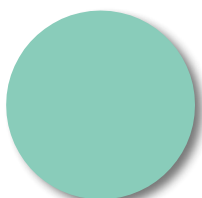
ZWART OXIDE
COBALT BLAUW



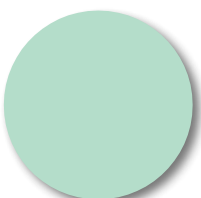
TEA01



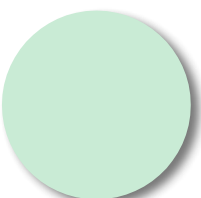
TEA02



TEA03

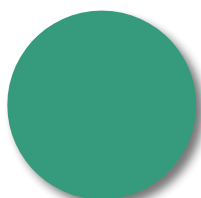


TEA 04

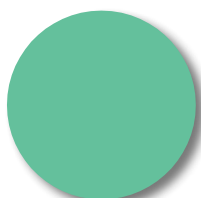


TEA 05

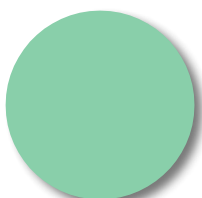
GOUD OKER
COBALT BLAUW



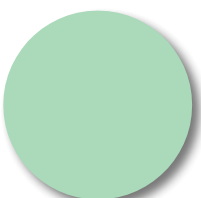
SEG01



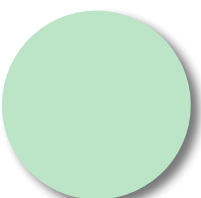
SEG02



SEG03

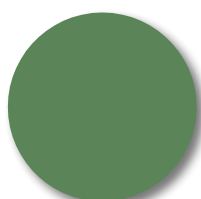


SEG 04

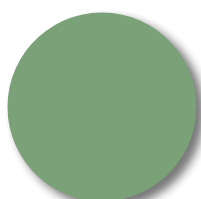


SEG 05

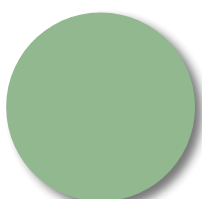
CONGO GROEN
COBALT BLAUW



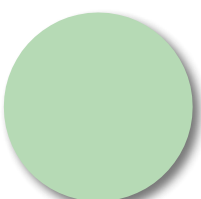
GRG01



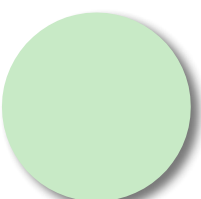
GRG02



GRG03

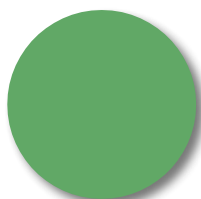


GRG04

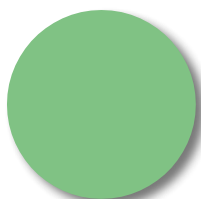


GRG05

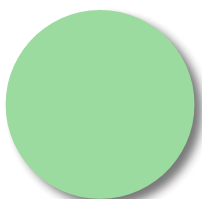
CONGO GROEN
ZWART OXIDE



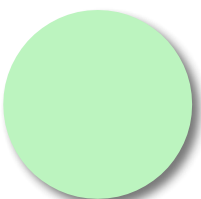
COG01



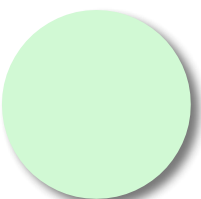
COG02



COG03



COG04



COG05

CONGO GROEN



OGR01



OGR02



OGR03

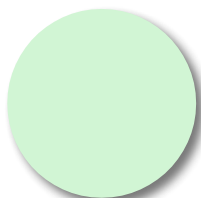


OGR 04

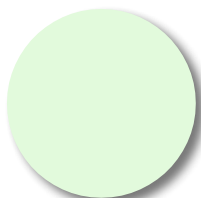


OGR 05

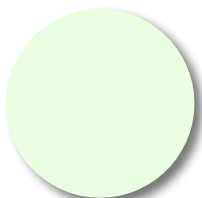
CONGO GROEN
GOUD OKER



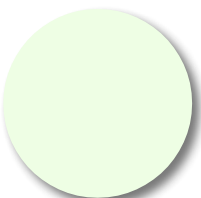
VER01



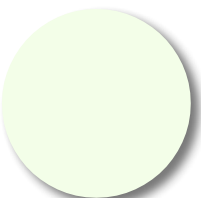
VER02



VER 03

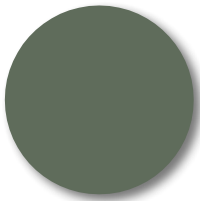


VER04



VER 05

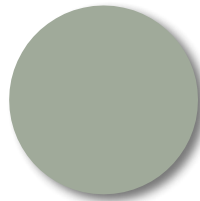
VERONEES GROEN



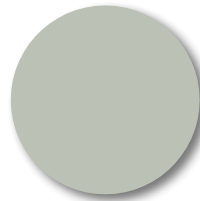
BGR01



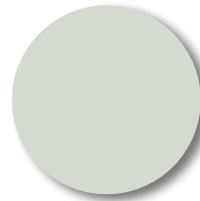
BGR02



BGR03

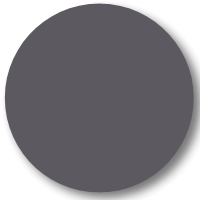


BGR 04

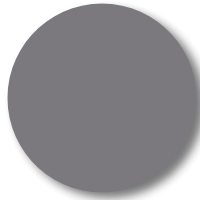


BGR 05

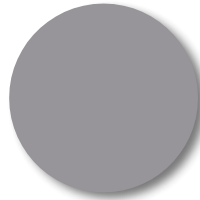
ZWART OXIDE
CONGO GROEN



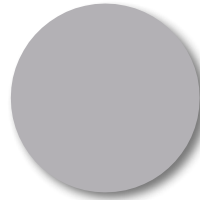
BLA01



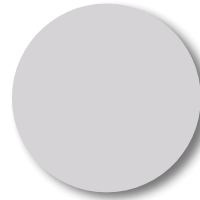
BLA02



BLA03



BLA 04



BLA 05

ZWART OXIDE

KLEUR CODE	VERPAKKINGEN			% VAN TOTAAL			NCS CODE
	DURO DOVER	PIGMENT 1	PIGMENT 2	DURO DOVER	PIGMENT 1	PIGMENT 2	NCS CODE
KLEUR CODE	DURO DOVER	TITAAAN WIT	-	DURO DOVER	TITAAAN WIT	-	NCS CODE
WHI01	20 Kg	500 gr	-	97,561%	2,439%	-	S0300-N
WHI02	20 Kg	200 gr	-	99,010%	0,990%	-	S0300-N / S0500-N
WHI03	20 Kg	100 gr	-	99,502%	0,498%	-	S0300-N / S0500-N
WHI04	20 Kg	50 gr	-	99,751%	0,249%	-	S0300-N / S0500-N
WHI05	20 Kg	25 gr	-	99,875%	0,125%	-	S0500-N
KLEUR CODE	DURO DOVER	PERZISCH GEEL	-	DURO DOVER	PERZISCH GEEL	-	NCS CODE
PER01	20 Kg	500 gr	-	97,561%	2,439%	-	S0530-G80Y
PER02	20 Kg	200 gr	-	99,010%	0,990%	-	S0515-G80Y
PER03	20 Kg	100 gr	-	99,502%	0,498%	-	S0510-G80Y
PER04	20 Kg	50 gr	-	99,751%	0,249%	-	S0507-G80Y
PER05	20 Kg	25 gr	-	99,875%	0,125%	-	S0505-G80Y
KLEUR CODE	DURO DOVER	GOUD OKER	-	DURO DOVER	GOUD OKER	-	NCS CODE
GOL01	20 Kg	500 gr	-	97,561%	2,439%	-	S2040-Y20R
GOL02	20 Kg	200 gr	-	99,010%	0,990%	-	S1040-Y20R / S1030-Y20R
GOL03	20 Kg	100 gr	-	99,502%	0,498%	-	S1030-Y20R
GOL04	20 Kg	50 gr	-	99,751%	0,249%	-	S1020-Y20R
GOL05	20 Kg	25 gr	-	99,875%	0,125%	-	S1015-Y20R
KLEUR CODE	DURO DOVER	ORANJE	-	DURO DOVER	ORANJE	-	NCS CODE
ORA01	20 Kg	500 gr	-	97,561%	2,439%	-	S1030-Y30R
ORA02	20 Kg	200 gr	-	99,010%	0,990%	-	S1020-Y30R
ORA03	20 Kg	100 gr	-	99,502%	0,498%	-	S1015-Y30R
ORA04	20 Kg	50 gr	-	99,751%	0,249%	-	S1010-Y30R
ORA05	20 Kg	25 gr	-	99,875%	0,125%	-	S0907-Y30R
KLEUR CODE	DURO DOVER	POMPEJAANS ROOD	GOUD OKER	DURO DOVER	POMPEJAANS ROOD	GOUD OKER	NCS CODE
DOR01	20 Kg	100 gr	400 gr	97,561%	0,488%	1,951%	S3040-Y50R / S2040-Y50R
DOR02	20 Kg	50 gr	200 gr	98,765%	0,247%	0,988%	S2040-Y40R
DOR03	20 Kg	25 gr	100 gr	99,379%	0,124%	0,497%	S2030-Y40R / S1030-Y40R
DOR04	60 Kg	25 gr	100 gr	99,792%	0,042%	0,166%	S1515-Y50R
DOR05	100 Kg	25 gr	100 gr	99,875%	0,025%	0,100%	S1015-Y40R
KLEUR CODE	DURO DOVER	POMPEJAANS ROOD	GOUD OKER	DURO DOVER	POMPEJAANS ROOD	GOUD OKER	NCS CODE
ROR01	20 Kg	200 gr	500 gr	96,618%	0,966%	2,416%	S2040-Y60R
ROR02	20 Kg	100 gr	250 gr	98,280%	0,491%	1,229%	S2040-Y60R / S2030-Y50R
ROR03	20 Kg	50 gr	125 gr	99,132%	0,248%	0,620%	S2030-Y50R
ROR04	60 Kg	50 gr	125 gr	99,709%	0,083%	0,208%	S1020-Y50R
ROR05	100 Kg	50 gr	125 gr	99,825%	0,050%	0,125%	S1515-Y50R
KLEUR CODE	DURO DOVER	POMPEJAANS ROOD	-	DURO DOVER	POMPEJAANS ROOD	-	NCS CODE
PPR01	20 Kg	500 gr	-	97,561%	2,439%	-	S3050-Y80R / S3040-Y80R
PPR02	20 Kg	200 gr	-	99,010%	0,990%	-	S3040-Y80R / S2040-Y80R
PPR03	20 Kg	100 gr	-	99,502%	0,498%	-	S2040-Y80R
PPR04	20 Kg	50 gr	-	99,751%	0,249%	-	S2030-Y80R / S1030-Y80R
PPR05	20 Kg	25 gr	-	99,875%	0,125%	-	S1020-Y80R
KLEUR CODE	DURO DOVER	POMPEJAANS ROOD	METAALOXIDE ROOD	DURO DOVER	POMPEJAANS ROOD	METAALOXIDE ROOD	NCS CODE
BRR01	20 KG	250 gr	250 gr	97,560%	1,220%	1,220%	S3050-Y90R / S3040-Y90R
BRR02	20 KG	100 gr	100 gr	99,010%	0,495%	0,495%	S3030-Y90R
BRR03	20 KG	50 gr	50 gr	99,502%	0,249%	0,249%	S2030-Y90R
BRR04	20 KG	25 gr	25 gr	99,750%	0,125%	0,125%	S2020-Y90R
BRR05	40 KG	25 gr	25 gr	99,876%	0,062%	0,062%	S1020-Y90R
KLEUR CODE	DURO DOVER	KASSELER BRUIN	GOUD OKER	DURO DOVER	KASSELER BRUIN	GOUD OKER	NCS CODE
OBR01	20 KG	250 gr	250 gr	97,560%	1,220%	1,220%	S4030-Y40R / S3030-Y40R
OBR02	20 KG	100 gr	100 gr	99,010%	0,495%	0,495%	S3020-Y40R
OBR03	20 KG	50 gr	50 gr	99,502%	0,249%	0,249%	S2020-Y40R
OBR04	20 KG	25 gr	25 gr	99,750%	0,125%	0,125%	S1515-Y50R
OBR05	40 KG	25 gr	25 gr	99,876%	0,062%	0,062%	S1510-Y50R

KLEUR CODE	VERPAKKINGEN			% VAN TOTAAL			NCS CODE
	DURO DOVER	PIGMENT 1	PIGMENT 2	DURO DOVER	PIGMENT 1	PIGMENT 2	NCS CODE
KLEUR CODE	DURO DOVER	POMPEJAANS ROOD	KASSELER BRUIN	DURO DOVER	POMPEJAANS ROOD	KASSELER BRUIN	NCS CODE
RBR01	20 Kg	100 gr	400 gr	97,561%	0,488%	1,951%	S4030-Y70R
RBR02	20 Kg	50 gr	200 gr	98,765%	0,247%	0,988%	S4020-Y80R / S3020-Y80R
RBR03	20 Kg	25 gr	100 gr	99,379%	0,124%	0,497%	S3020-Y80R
RBR04	60 Kg	25 gr	100 gr	99,792%	0,042%	0,166%	S2020-Y80R / S1515-Y80R
RBR05	100 Kg	25 gr	100 gr	99,875%	0,025%	0,100%	S1515-Y80R
KLEUR CODE	DURO DOVER	KASSELER BRUIN	-	DURO DOVER	KASSELER BRUIN	-	NCS CODE
KBR01	20 Kg	500 gr	-	97,561%	2,439%	-	S5020-Y70R / S4020-Y70R
KBR02	20 Kg	200 gr	-	99,010%	0,990%	-	S4020-Y70R / S3020-Y70R
KBR03	20 Kg	100 gr	-	99,502%	0,498%	-	S3020-Y70R / S2020-Y70R
KBR04	20 Kg	50 gr	-	99,751%	0,249%	-	S2010-Y70R
KBR05	20 Kg	25 gr	-	99,875%	0,125%	-	S1510-Y70R
KLEUR CODE	DURO DOVER	METAALOXIDE ROOD	-	DURO DOVER	METAALOXIDE ROOD	-	NCS CODE
MOR01	20 Kg	500 gr	-	97,561%	2,439%	-	S4030-R
MOR02	20 Kg	200 gr	-	99,010%	0,990%	-	S3030-R
MOR03	20 Kg	100 gr	-	99,502%	0,498%	-	S2030-R
MOR04	20 Kg	50 gr	-	99,751%	0,249%	-	S2020-R
MOR05	20 Kg	25 gr	-	99,875%	0,125%	-	S1515-R10B
KLEUR CODE	DURO DOVER	METAALOXIDE ROOD	ULTRAMARIJN BLAUW	DURO DOVER	METAALOXIDE ROOD	ULTRAMARIJN BLAUW	NCS CODE
PUR01	20 KG	250 gr	250 gr	97,560%	1,220%	1,220%	S4020-R20B
PUR02	20 KG	100 gr	100 gr	99,010%	0,495%	0,495%	S3020-R20B
PUR03	20 KG	50 gr	50 gr	99,502%	0,249%	0,249%	S2020-R20B
PUR04	20 KG	25 gr	25 gr	99,750%	0,125%	0,125%	S1515-R10B
PUR05	40 KG	25 gr	25 gr	99,876%	0,062%	0,062%	S1510-R10B
KLEUR CODE	DURO DOVER	MAHONIE	-	DURO DOVER	MAHONIE	-	NCS CODE
MAH01	20 Kg	500 gr	-	97,561%	2,439%	-	S5020-R10B
MAH02	20 Kg	200 gr	-	99,010%	0,990%	-	S4020-R10B
MAH03	20 Kg	100 gr	-	99,502%	0,498%	-	S3020-R10B
MAH04	20 Kg	50 gr	-	99,751%	0,249%	-	S2020-R10B
MAH05	20 Kg	25 gr	-	99,875%	0,125%	-	S1515-R10B
KLEUR CODE	DURO DOVER	COBALT BLAUW	METAALOXIDE ROOD	DURO DOVER	COBALT BLAUW	METAALOXIDE ROOD	NCS CODE
DVI01	20 KG	250 gr	250 gr	97,560%	1,220%	1,220%	S4020-R30B
DVI02	20 KG	100 gr	100 gr	99,010%	0,495%	0,495%	S3020-R30B
DVI03	20 KG	50 gr	50 gr	99,502%	0,249%	0,249%	S3010-R30B
DVI04	20 KG	25 gr	25 gr	99,750%	0,125%	0,125%	S2010-R20B
DVI05	40 KG	25 gr	25 gr	99,876%	0,062%	0,062%	S1510-R20B
KLEUR CODE	DURO DOVER	MAHONIE	ULTRAMARIJN BLAUW	DURO DOVER	MAHONIE	ULTRAMARIJN BLAUW	NCS CODE
GVI01	20 KG	250 gr	250 gr	97,560%	1,220%	1,220%	S5010-R30B
GVI02	20 KG	100 gr	100 gr	99,010%	0,495%	0,495%	S4010-R30B
GVI03	20 KG	50 gr	50 gr	99,502%	0,249%	0,249%	S3010-R40B
GVI04	20 KG	25 gr	25 gr	99,750%	0,125%	0,125%	S1510-R40B
GVI05	40 KG	25 gr	25 gr	99,876%	0,062%	0,062%	S1010-R40B
KLEUR CODE	DURO DOVER	ULTRAMARIJN BLAUW	-	DURO DOVER	ULTRAMARIJN BLAUW	-	NCS CODE
UMB01	20 Kg	500 gr	-	97,561%	2,439%	-	S2040-R80B
UMB02	20 Kg	200 gr	-	99,010%	0,990%	-	S1040-R80B
UMB03	20 Kg	100 gr	-	99,502%	0,498%	-	S2020-R80B
UMB04	20 Kg	50 gr	-	99,751%	0,249%	-	S1510-R80B
UMB05	20 Kg	25 gr	-	99,875%	0,125%	-	S1005-R90B
KLEUR CODE	DURO DOVER	ULTRAMARIJN BLAUW	COBALT BLAUW	DURO DOVER	ULTRAMARIJN BLAUW	COBALT BLAUW	NCS CODE
BLU01	20 KG	250 gr	250 gr	97,560%	1,220%	1,220%	S2040-R90B
BLU02	20 KG	100 gr	100 gr	99,010%	0,495%	0,495%	S2030-R90B
BLU03	20 KG	50 gr	50 gr	99,502%	0,249%	0,249%	S1030-R90B
BLU04	20 KG	25 gr	25 gr	99,750%	0,125%	0,125%	S1515-B
BLU05	40 KG	25 gr	25 gr	99,876%	0,062%	0,062%	S1010-R90B

KLEUR CODE	VERPAKKINGEN			% VAN TOTAAL			NCS CODE
	DURO DOVER	PIGMENT 1	PIGMENT 2	DURO DOVER	PIGMENT 1	PIGMENT 2	NCS CODE
KLEUR CODE	DURO DOVER	COBALT BLAUW	-	DURO DOVER	COBALT BLAUW	-	NCS CODE
COB01	20 Kg	500 gr	-	97,561%	2,439%	-	S2040-B
COB02	20 Kg	200 gr	-	99,010%	0,990%	-	S1040-B
COB03	20 Kg	100 gr	-	99,502%	0,498%	-	S2020-B / S1020-B
COB04	20 Kg	50 gr	-	99,751%	0,249%	-	S1015-B
COB05	20 Kg	25 gr	-	99,875%	0,125%	-	S1010-B10G
KLEUR CODE	DURO DOVER	ZWART OXIDE	COBALT BLAUW	DURO DOVER	ZWART OXIDE	COBALT BLAUW	NCS CODE
GRB01	20 Kg	100 gr	400 gr	97,561%	0,488%	1,951%	S4020-B
GRB02	20 Kg	50 gr	200 gr	98,765%	0,247%	0,988%	S3020-B
GRB03	20 Kg	25 gr	100 gr	99,379%	0,124%	0,497%	S2020-B
GRB04	60 Kg	25 gr	100 gr	99,792%	0,042%	0,166%	S1510-B
GRB05	100 Kg	25 gr	100 gr	99,875%	0,025%	0,100%	S1010-B
KLEUR CODE	DURO DOVER	ZWART OXIDE	ULTRAMARIJN BLAUW	DURO DOVER	ZWART OXIDE	ULTRAMARIJN BLAUW	NCS CODE
DAB01	20 Kg	100 gr	400 gr	97,561%	0,488%	1,951%	S4020-R80B
DAB02	20 Kg	50 gr	200 gr	98,765%	0,247%	0,988%	S3020-R80B
DAB03	20 Kg	25 gr	100 gr	99,379%	0,124%	0,497%	S2020-R80B
DAB04	60 Kg	25 gr	100 gr	99,792%	0,042%	0,166%	S1510-R90B
DAB05	100 Kg	25 gr	100 gr	99,875%	0,025%	0,100%	S1005-R90B
KLEUR CODE	DURO DOVER	ZWART OXIDE	COBALT BLAUW	DURO DOVER	ZWART OXIDE	COBALT BLAUW	NCS CODE
BLB01	20 KG	250 gr	250 gr	97,560%	1,220%	1,220%	S5010-R90B
BLB02	20 KG	100 gr	100 gr	99,010%	0,495%	0,495%	S4010-R90B
BLB03	20 KG	50 gr	50 gr	99,502%	0,249%	0,249%	S3010-R90B
BLB04	20 KG	25 gr	25 gr	99,750%	0,125%	0,125%	S2010-R90B
BLB05	40 KG	25 gr	25 gr	99,876%	0,062%	0,062%	S1005-R90B
KLEUR CODE	DURO DOVER	GOUD OKER	COBALT BLAUW	DURO DOVER	GOUD OKER	COBALT BLAUW	NCS CODE
TEA01	20 Kg	100 gr	400 gr	97,561%	0,488%	1,951%	S3020-B50G
TEA02	20 Kg	50 gr	200 gr	98,765%	0,247%	0,988%	S2020-B50G
TEA03	20 Kg	25 gr	100 gr	99,379%	0,124%	0,497%	S1515-B50G
TEA04	60 Kg	25 gr	100 gr	99,792%	0,042%	0,166%	S1010-B70G
TEA05	100 Kg	25 gr	100 gr	99,875%	0,025%	0,100%	S1005-B50G
KLEUR CODE	DURO DOVER	CONGO GROEN	COBALT BLAUW	DURO DOVER	CONGO GROEN	COBALT BLAUW	NCS CODE
SEG01	20 KG	250 gr	250 gr	97,560%	1,220%	1,220%	S3020-B70G
SEG02	20 KG	100 gr	100 gr	99,010%	0,495%	0,495%	S2020-B70G
SEG03	20 KG	50 gr	50 gr	99,502%	0,249%	0,249%	S2010-B90G
SEG04	20 KG	25 gr	25 gr	99,750%	0,125%	0,125%	S2010-B90G/S1010-B90G
SEG05	40 KG	25 gr	25 gr	99,876%	0,062%	0,062%	S0907-B80G
KLEUR CODE	DURO DOVER	ZWART OXIDE	CONGO GROEN	DURO DOVER	ZWART OXIDE	CONGO GROEN	NCS CODE
GRG01	20 Kg	100 gr	400 gr	97,561%	0,488%	1,951%	S4010-G10Y
GRG02	20 Kg	50 gr	200 gr	98,765%	0,247%	0,988%	S3010-G10Y
GRG03	20 Kg	25 gr	100 gr	99,379%	0,124%	0,497%	S3010-G10Y/S2010-G10Y
GRG04	60 Kg	25 gr	100 gr	99,792%	0,042%	0,166%	S2010-G10Y
GRG05	100 Kg	25 gr	100 gr	99,875%	0,025%	0,100%	S1010-G20Y
KLEUR CODE	DURO DOVER	CONGO GROEN	-	DURO DOVER	CONGO GROEN	-	NCS CODE
COG01	20 Kg	500 gr	-	97,561%	2,439%	-	S3020-G20Y
COG02	20 Kg	200 gr	-	99,010%	0,990%	-	S2020-G20Y
COG03	20 Kg	100 gr	-	99,502%	0,498%	-	S1515-G20Y
COG04	20 Kg	50 gr	-	99,751%	0,249%	-	S1510-G20Y
COG05	20 Kg	25 gr	-	99,875%	0,125%	-	S1010-G30Y
KLEUR CODE	DURO DOVER	CONGO GROEN	GOUD OKER	DURO DOVER	CONGO GROEN	GOUD OKER	NCS CODE
OGR01	20 KG	250 gr	250 gr	97,560%	1,220%	1,220%	S3030-G70Y
OGR02	20 KG	100 gr	100 gr	99,010%	0,495%	0,495%	S2020-G70Y
OGR03	20 KG	50 gr	50 gr	99,502%	0,249%	0,249%	S1515-G80Y
OGR04	20 KG	25 gr	25 gr	99,750%	0,125%	0,125%	S1510-G80Y
OGR05	40 KG	25 gr	25 gr	99,876%	0,062%	0,062%	S1010-G80Y

KLEUR CODE	VERPAKKINGEN			% VAN TOTAAL			NCS CODE
	DURO DOVER	PIGMENT 1	PIGMENT 2	DURO DOVER	PIGMENT 1	PIGMENT 2	NCS CODE
KLEUR CODE	DURO DOVER	VERONEES GROEN	-	DURO DOVER	VERONEES GROEN	-	NCS CODE
VER01	20 Kg	500 gr	-	97,561%	2,439%	-	S1510-G40Y
VER02	20 Kg	200 gr	-	99,010%	0,990%	-	S1005-G30Y
VER03	20 Kg	100 gr	-	99,502%	0,498%	-	S1002-G50Y
VER04	20 Kg	50 gr	-	99,751%	0,249%	-	S1002-G50Y/S0603-G40Y
VER05	20 Kg	25 gr	-	99,875%	0,125%	-	S0603-G40Y
KLEUR CODE	DURO DOVER	ZWART OXIDE	CONGO GROEN	DURO DOVER	ZWART OXIDE	CONGO GROEN	NCS CODE
BGR01	20 KG	250 gr	250 gr	97,560%	1,220%	1,220%	S5005-B80G
BGR02	20 KG	100 gr	100 gr	99,010%	0,495%	0,495%	S4005-B80G
BGR03	20 KG	50 gr	50 gr	99,502%	0,249%	0,249%	S3005-B80G
BGR04	20 KG	25 gr	25 gr	99,750%	0,125%	0,125%	S2005-G
BGR05	40 KG	25 gr	25 gr	99,876%	0,062%	0,062%	S1502-B50G
KLEUR CODE	DURO DOVER	ZWART OXIDE	-	DURO DOVER	ZWART OXIDE	-	NCS CODE
BLA01	20 Kg	500 gr	-	97,561%	2,439%	-	S6502-B
BLA02	20 Kg	200 gr	-	99,010%	0,990%	-	S5502-B
BLA03	20 Kg	100 gr	-	99,502%	0,498%	-	S4502-B
BLA04	20 Kg	50 gr	-	99,751%	0,249%	-	S3502-B
BLA05	20 Kg	25 gr	-	99,875%	0,125%	-	S2502-B

NCS CODES De NCS-codes zijn met het oog bepaald en zijn een benadering van de kleuren. Door de fijnkorrelige structuur van Duro is het niet mogelijk de kleuren te scannen met een NCS Reader. In veel gevallen zullen de kleuren van de leem op de wand een iets lichtere verschijning hebben dan de NCS kleurstalen. Dit heeft te maken met de lichtinval op en langseen wand. Om te zien of specifieke kleuren geschikt zijn voor uw project, is het mogelijk kleurstalen te bestellen bij de handelaar o.v.v. de aangegeven kleurcode. Door het gebruik van aardepigmenten kunnen verschillen in kleuren ontstaan. Getoonde kleuren zijn onderhevig aan het gebruik van verschillende beeldschermen. Er kunnen aan de getoonde kleuren en de NCS Codes geen rechten worden ontleend.

HOE MAAKT U DE GEWENSTE KLEUR?

1 ZOEK DE GEWENSTE KLEUR IN DE TABELLEN AAN DE HAND VAN DE KLEURCODE

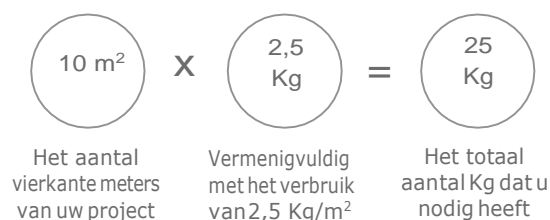
KLEUR CODE	DURO DOVER	POMPEJAANS ROOD	GOUD OKER	DURO DOVER	POMPEJAANS ROOD	GOUD OKER	NCS CODE
DOR03	20 Kg	25 gr	100 gr	99,379%	0,124%	0,497%	S2030-Y40R / S1030-Y40R



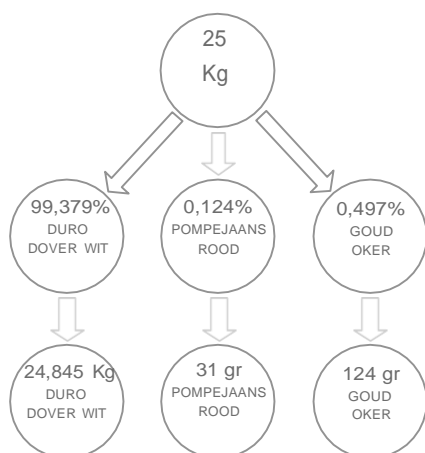
Als voorbeeld nemen we DOR03

DO R 03

2 BEREKEN DE TOTALE HOEVEELHEID DIE U NODIG HEEFT



3 VERMENIGVULDIG HET TOTAAL MET DE PERCENTAGES



In de tabellen staat hoe u de kleuren kunt maken met standaard verpakkingsgroottes. Indien u meer of minder materiaal benodigd en met een som van onze verpakkingen niet op de juiste hoeveelheid voor uw project uitkomt, kunt u de berekening in procenten zoals hier links getoond gebruiken.

4 MENGEN EN VERWERKEN

Omdat de kleurkracht van pigmenten groot is, dient het mengen ervan met leemstuc exacte gebeuren. Daarom adviseren wij om iets meer materiaal te mengen dan het verwachte verbruik om eventueel kleurverschil tussen twee mengsels te voorkomen.

Meng pigmenten eerst met water alvorens u de leemstuc toevoegt, dit verhoogt de homogeniteit binnen één mengsel. Voeg dan Duro toe en meng goed door. Verwerk Duro volgens de verwerkingsvoorschriften in het Duro Productblad.